

Excel Homes™

easy-living collection™



plans
created by



800 | 345 | 6767

www.excelhomes.com

Affordable Excellence



Introducing America's Best Plans. Thanks for stopping by to visit your *Excel Homes* custom builder. At *Excel Homes*, we're proud to introduce the latest in new floor plan designs—from America's leader in residential home planning, *Design Basics*.

New Designs From America's Leaders. This new book introduces exciting new home plans that combine everything *Excel Homes* has learned from a generation of building America's premier custom homes—together with everything *Design Basics* has learned from creating best-selling new home plans every year.

Plan Your Dream. Now imagine it—your Dream Home—custom built exactly as you've always dreamed! *Excel Homes* is ready to assist you, not only with your new home's design, but with building the finest custom home possible.

Don't Just Dream It. Build It. Your *Excel Homes* custom builder offers many new ways to fully customize your new home with stunning exteriors and interiors. From our many special options like upgraded cabinetry, Stainmaster® carpeting, hardwood flooring and luxury whirlpool baths. And so much more.

We'll Design It Just For You. If you don't find the home of your dreams here, we'll design your plan just for you. The only limits are your imagination. So curl up and enjoy these cutting edge new home plans from America's leaders in residential home design and construction. *When you're ready to build, remember that your Excel Homes custom builder is ready to make all your dreams come true.*

TOLL FREE: 1-800-345-6767

www.excelhomes.com

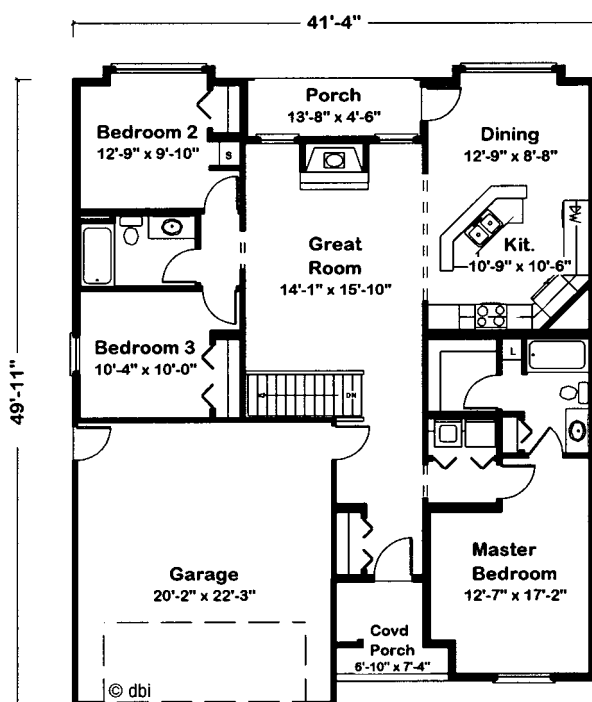


7289 Orchard Valley

Simple lines create an understated sophistication. The open living areas make the home feel spacious and encourage casual get-togethers. A

door in the dining area provides convenient access when grilling in the backyard. Separated from secondary bedrooms, the master suite offers a

quiet place to take a relaxing bath or grab a quick nap.

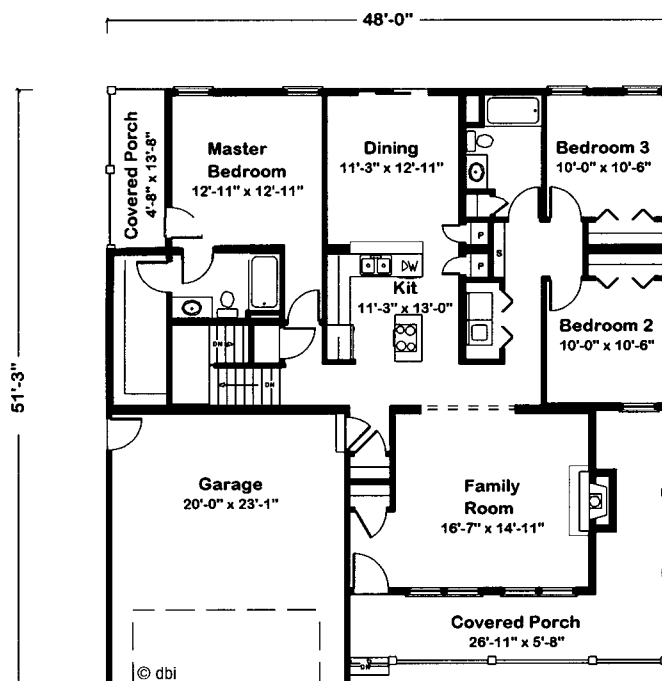


1390 Finished Sq. Ft.
(All footages approximate)



7282 Blue Ridge

A huge wrap-around porch sets a welcoming tone for this comfortable one-story. Carrying in groceries will be a snap, with the kitchen so close to the garage entry. Two pantries will make putting those groceries away even easier. Adults will enjoy the secluded master suite. With a laundry closet next to the secondary bedrooms, youngsters might even help wash clothes.

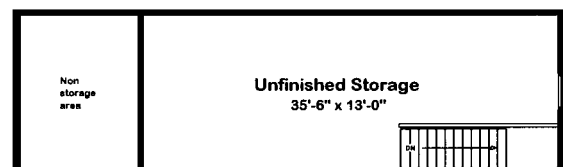
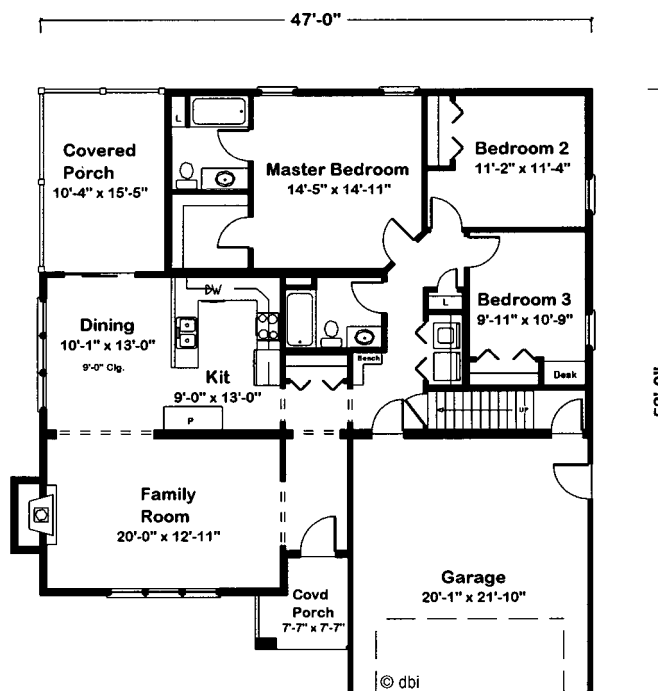


1528 Finished Sq. Ft.
(All footages approximate)



7287 Bloomfield

A double gable, a shed dormer and a deep, welcoming porch give this home its appealing appearance. An exceptionally sunny dining area leads to a private porch - the perfect place to sip a cup of coffee and enjoy some fresh air. Bedroom 3's built-in desk is an ideal spot for doing homework - or playing computer games. And with a bench just inside the garage, there's no excuse for not removing wet shoes.



Unfinished Storage
Adds 440 Sq. Ft.

1580 Finished Sq. Ft.
(All footages approximate)

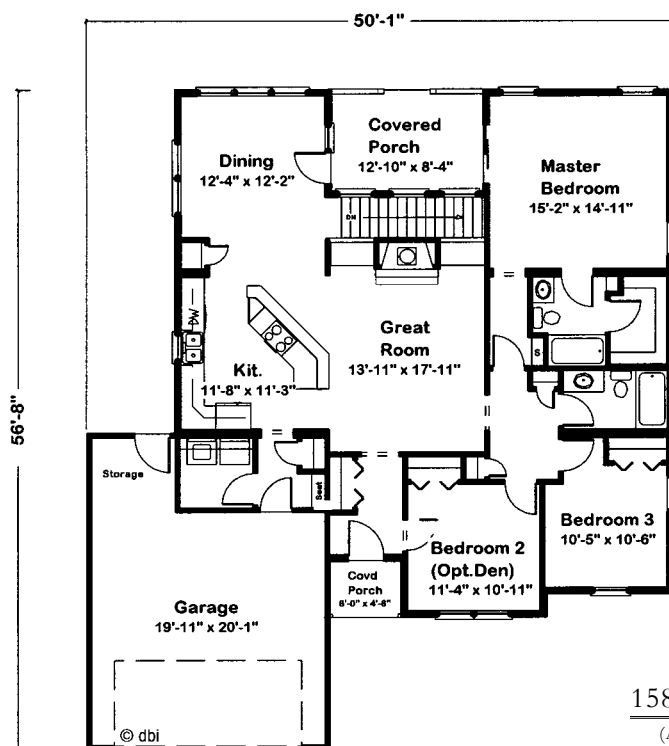


7285 Chalco Pointe

Arch-topped columns make this home's front entrance a pleasing focal point. Inside, a casual floor plan is sure to make guests feel right at

home. Two low entertainment centers in the great room provide room for the TV, VCR and stereo equipment. While natural light pours in through

high windows. A long, angled snack bar allows family and friends to grab a bite while watching television or to interact while food is being prepared.

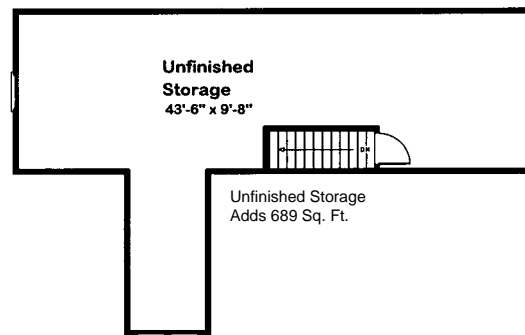
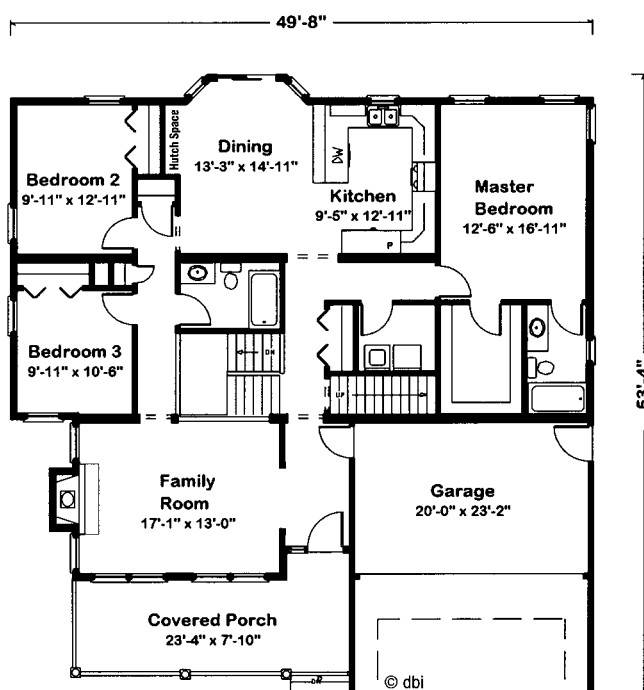


1583 Finished Sq. Ft.
(All footages approximate)

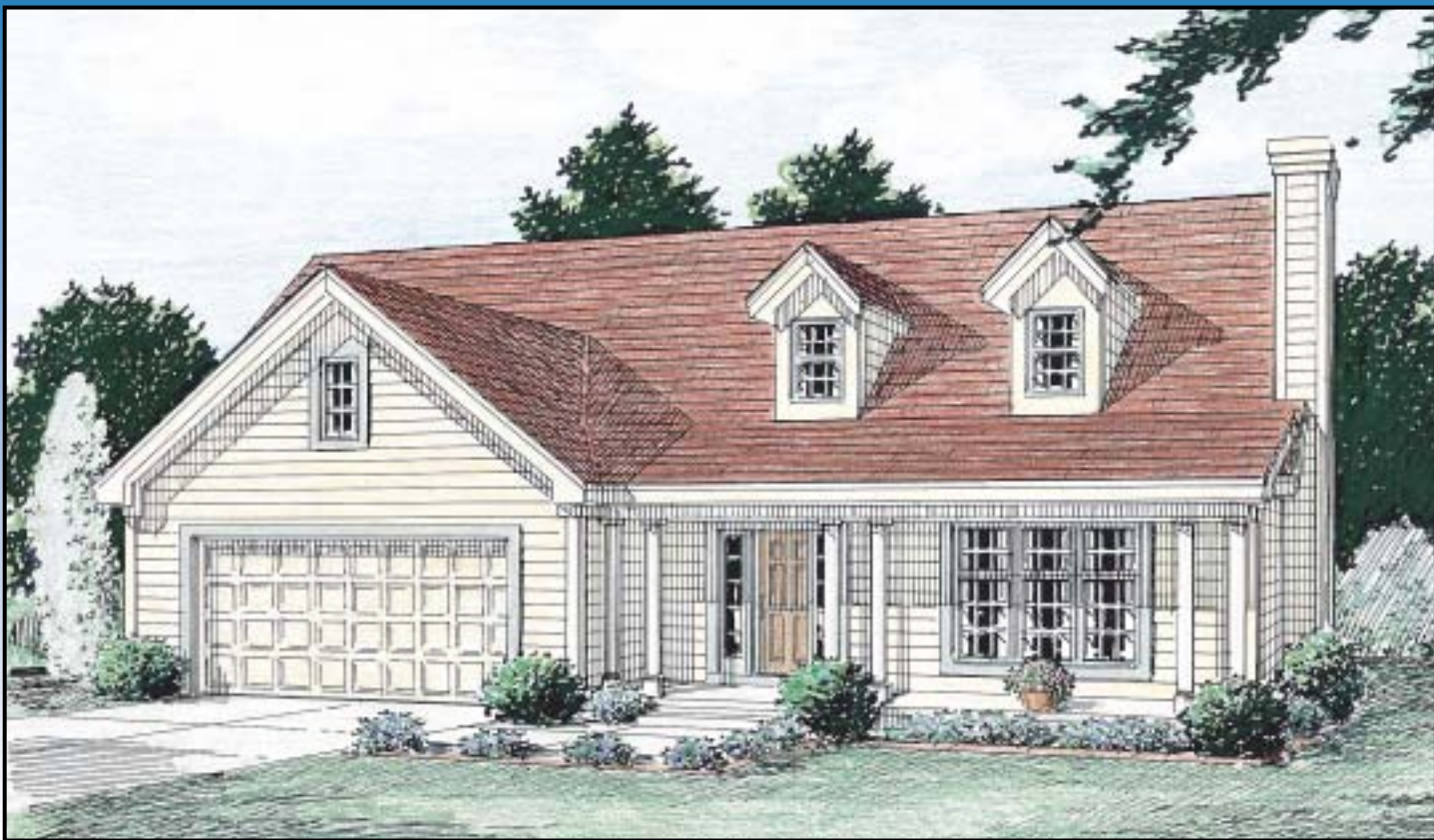


7286 Echo Hills

An oversized dormer and a pleasing porch make this an inviting home. A charming fireplace and two sets of double windows create a warm, sunny family room. Additional cabinets in the dining area make setting the table a breeze. The snack bar provides extra seating or a great spot for a buffet. Adults will appreciate the quiet, secluded master suite with its large walk-in closet and nearby laundry closet.



1640 Finished Sq. Ft.
(All footages approximate)

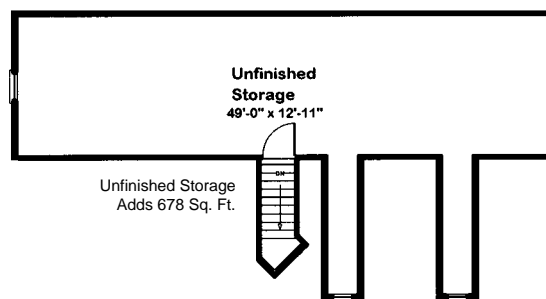
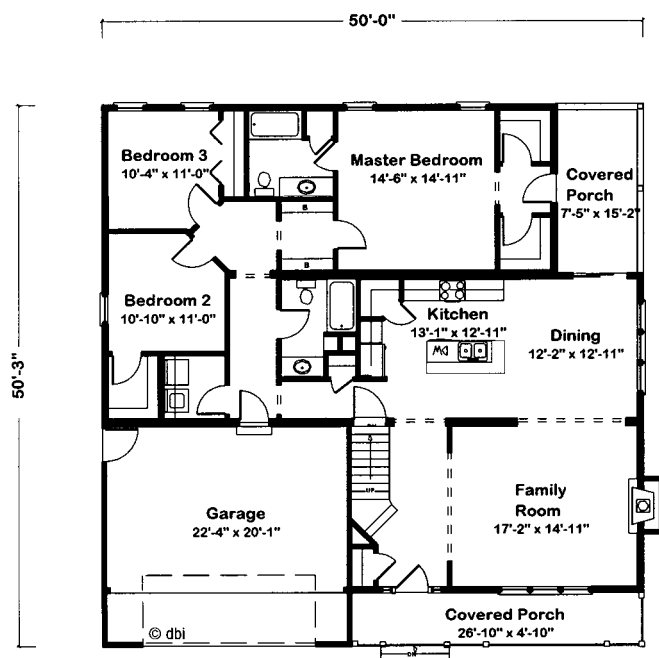


7284 Fairacres

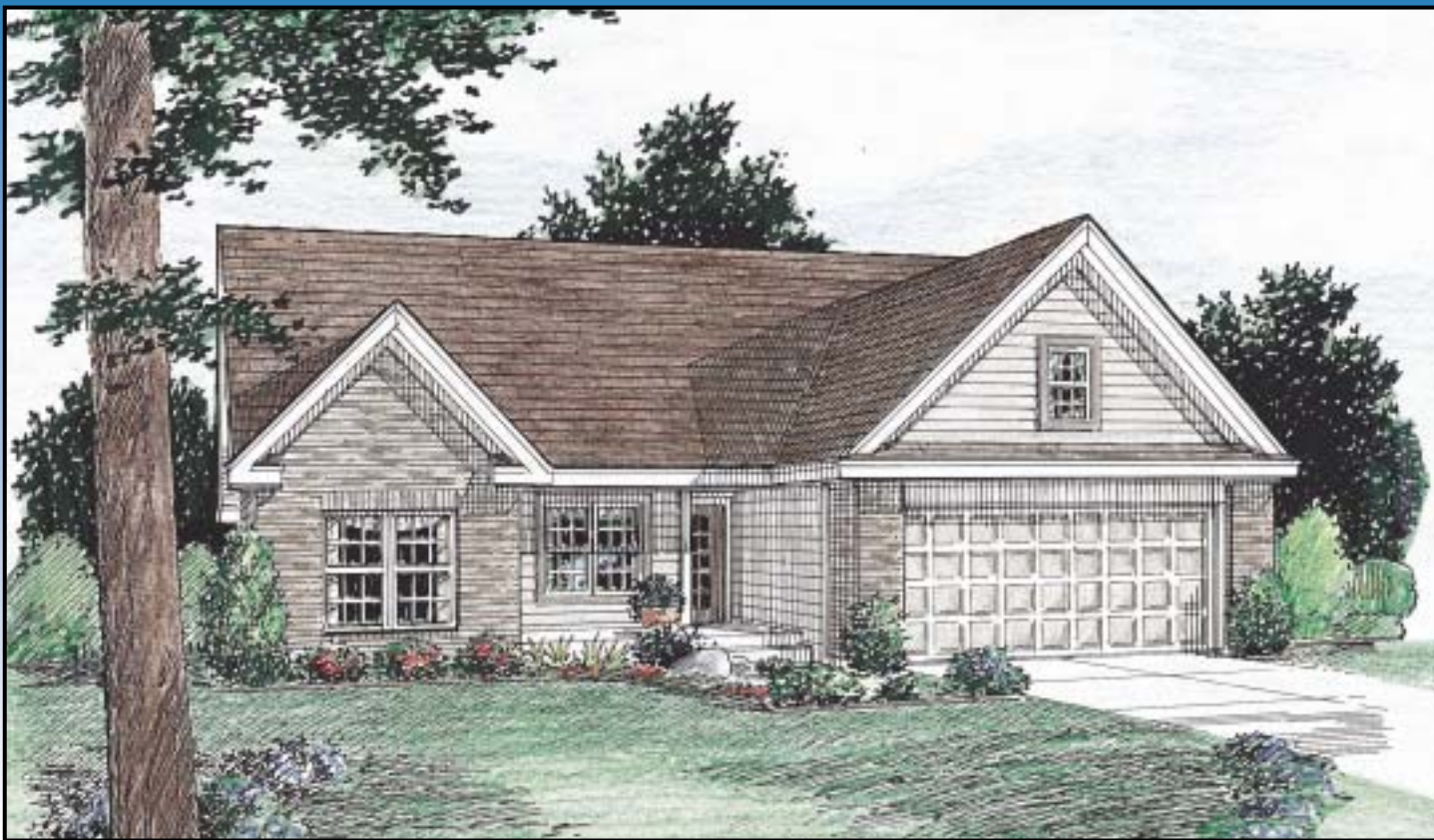
Dormers and three pairs of columns lend a nostalgic touch to this home. Inside, ample storage makes it ideal for growing families or empty nesters with a lifetime of treasures. Snacks and

packaged foods easily fit in the kitchen's corner pantry. The master bedroom offers two walk-in closets and shelves in the hall - perfect for displaying collectibles. And there's

plenty of room for holiday decorations and outgrown toys in the unfinished area upstairs.



1754 Finished Sq. Ft.
(All footages approximate)

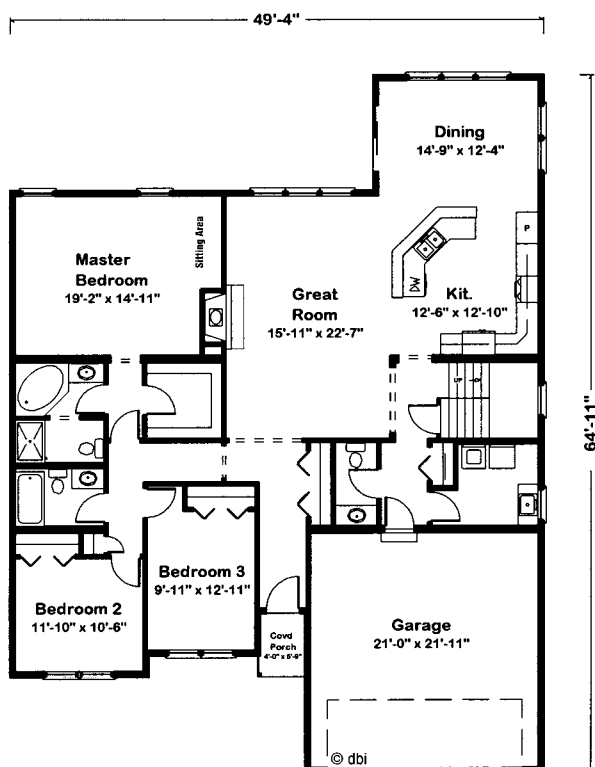


7283 Wildewood

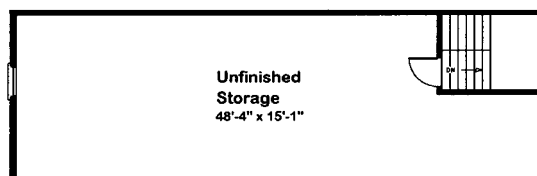
Cross gables and multi-paned windows give this one-story its charm. Friends and family will feel right at home in the open great room, kitchen

and dining area. The fireplace spreads a sense of warmth throughout the area and two sets of triple windows bring in lots of natural light. A sitting

area in the spacious master bedroom provides a quiet spot to read. More than 700 square feet can be finished upstairs, or left as storage space.



Unfinished Storage
Adds 703 Sq. Ft.



1987 Finished Sq. Ft.
(All footages approximate)

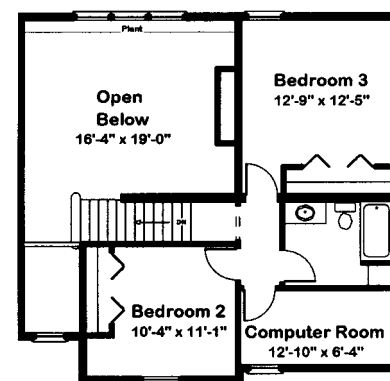
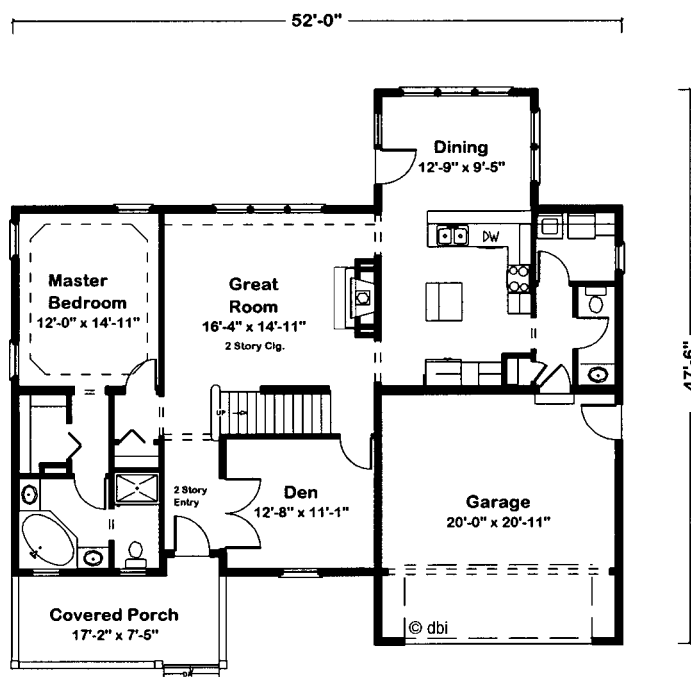


7294 Fairview

A gabled porch with a side entrance gives this 1 1/2 story home an interesting twist. Busy adults will relish stepping behind the French doors off

the entry into the den's quiet solitude. When it's time to entertain, the 2-story great room is sure to dazzle -- with its fireplace, stacked windows,

gracious staircase and expansive plant shelf. The second level offers a computer room for the children.



1405 Main Level
598 Second Level
2003 Total Finished Sq. Ft.
(All footages approximate)

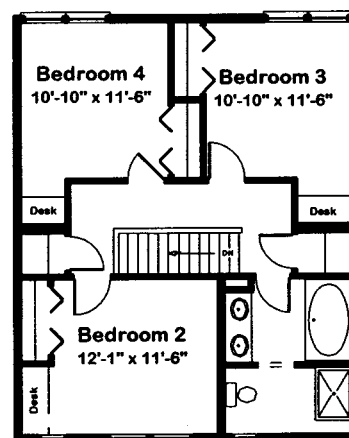
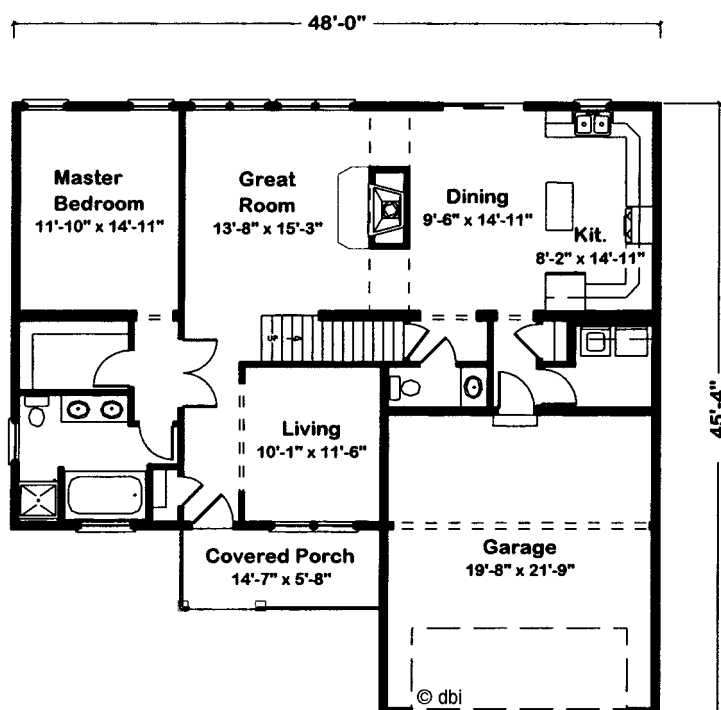


7300 Spruce Falls

A pair of octagon windows gives this home its unique appeal. A good night's sleep will be easier to come by in this quiet, secluded master suite

and with a built-in desk in each secondary bedroom, there'll be no need to drag homework down to the dining room table. Secondary

bedrooms share a full, compartmented bath with shower, allowing two people to use different areas.



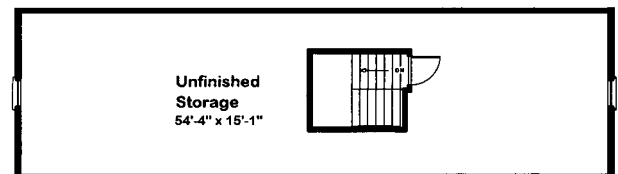
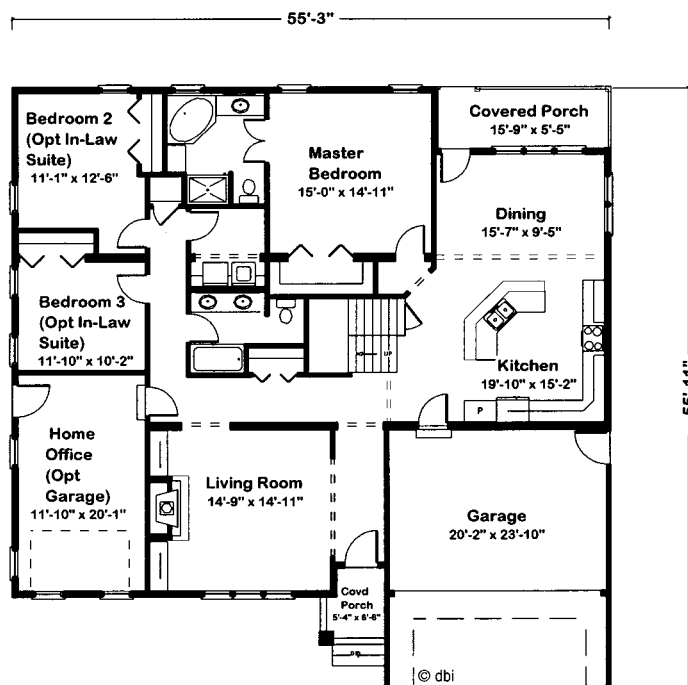
1295 Main Level
771 Second Level
2066 Total Finished Sq. Ft.

(All footages approximate)



7288 Brookside

Attractive gables anchor each end of this home. Its flexible floor plan accommodates different family lifestyles. A spacious home office could be turned into a garage for a third car or a workshop. Bedrooms 2 and 3 are comfortable children's rooms. Joined, they become a gracious suite for an older relative. The upstairs bonus area could be used for an additional bedroom, hobby room or game room.



Unfinished Storage
Adds 800 Sq. Ft.

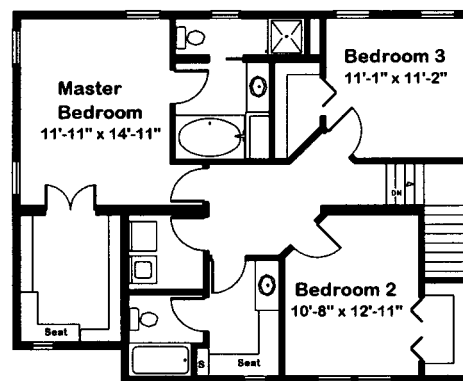
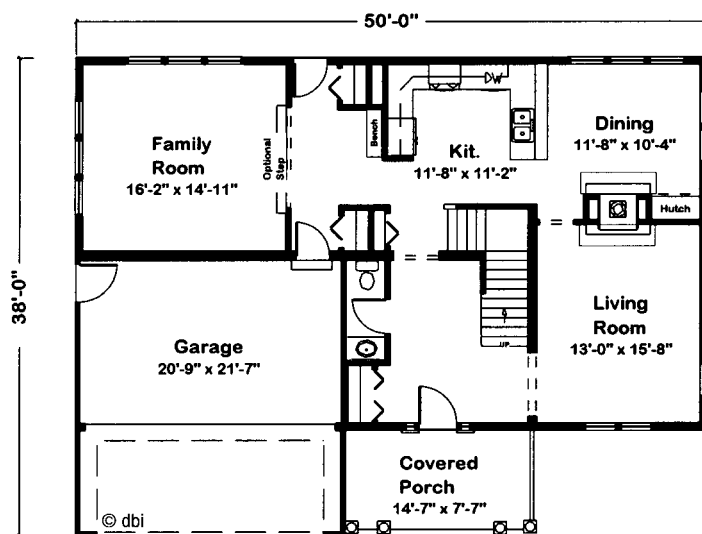
2126 Finished Sq. Ft.

(All footages approximate)

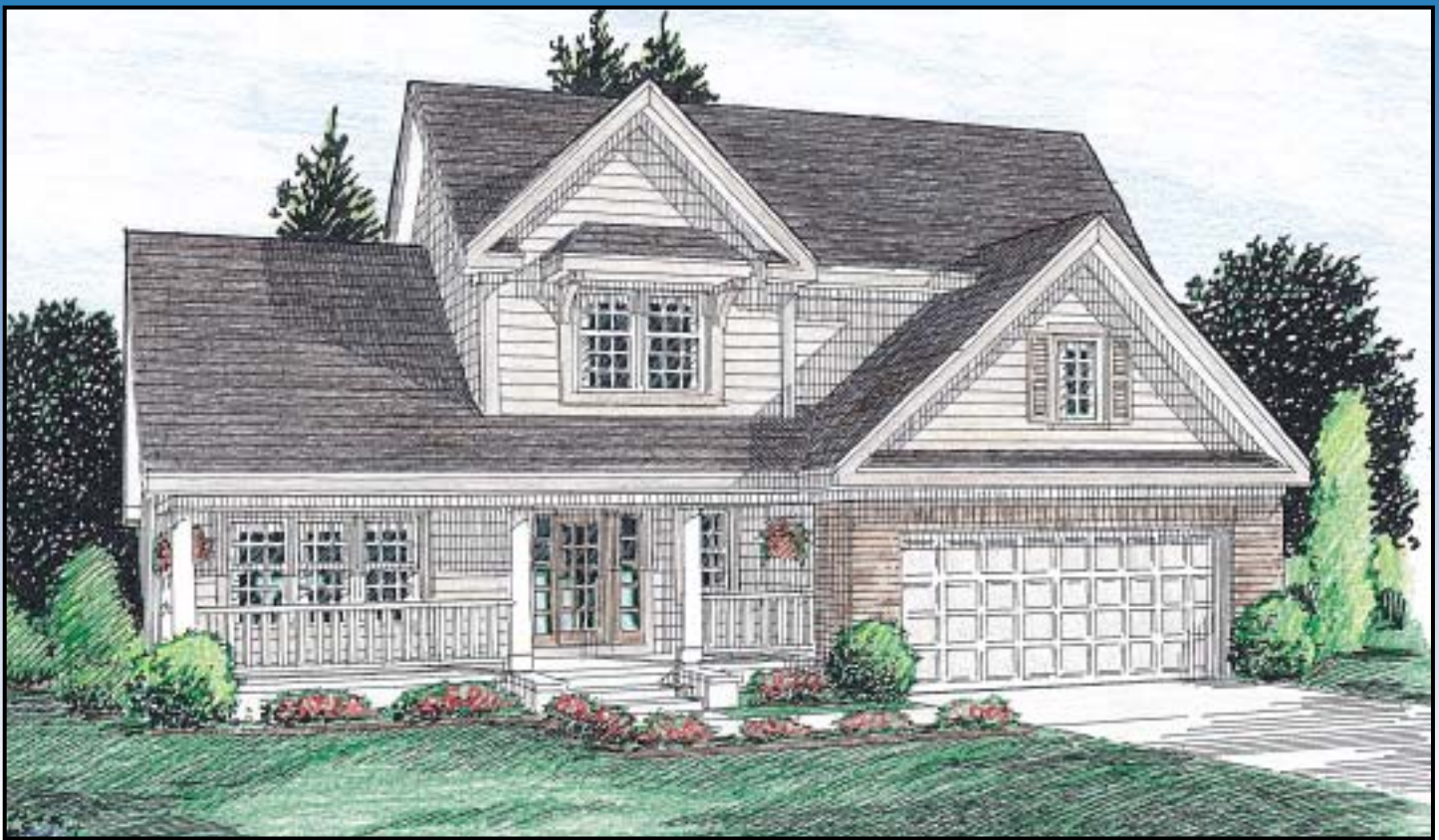


7295 Hillsdale

A pair of double columns creates a pleasing approach to the front door. Just inside, a spacious entry provides a lovely spot to greet guests and see them off. A see-thru fireplace adds warmth to gatherings in the dining and living rooms. In the master suite, a compartmented bath allows two people to use different areas. With the washer and dryer near all the bedrooms, everyone can pitch in with laundry.

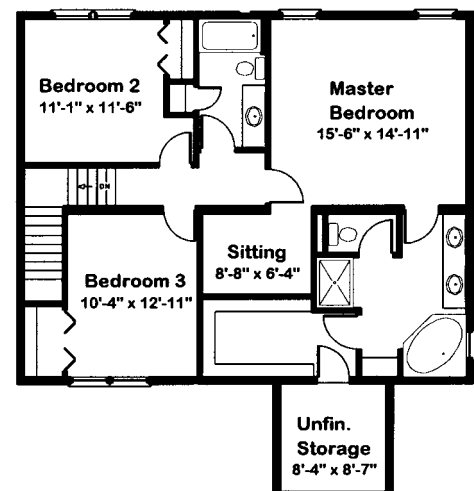
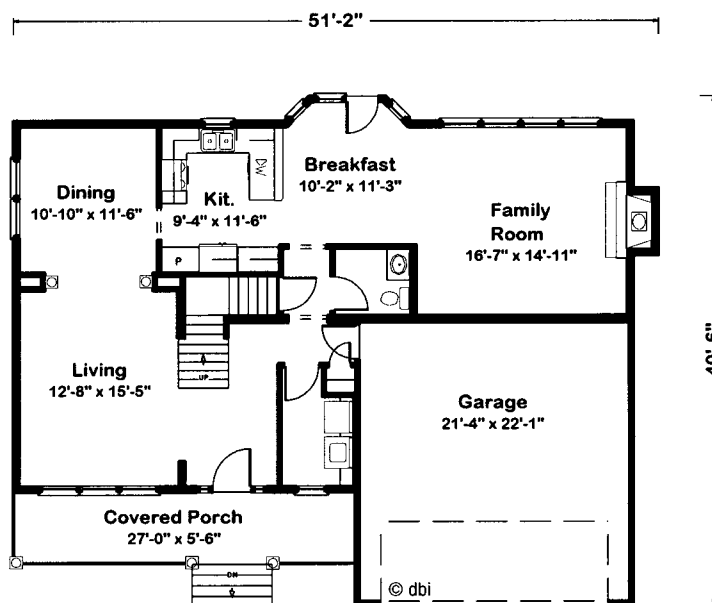


1134 Main Level
998 Second Level
2132 Total Finished Sq. Ft.
(All footages approximate)



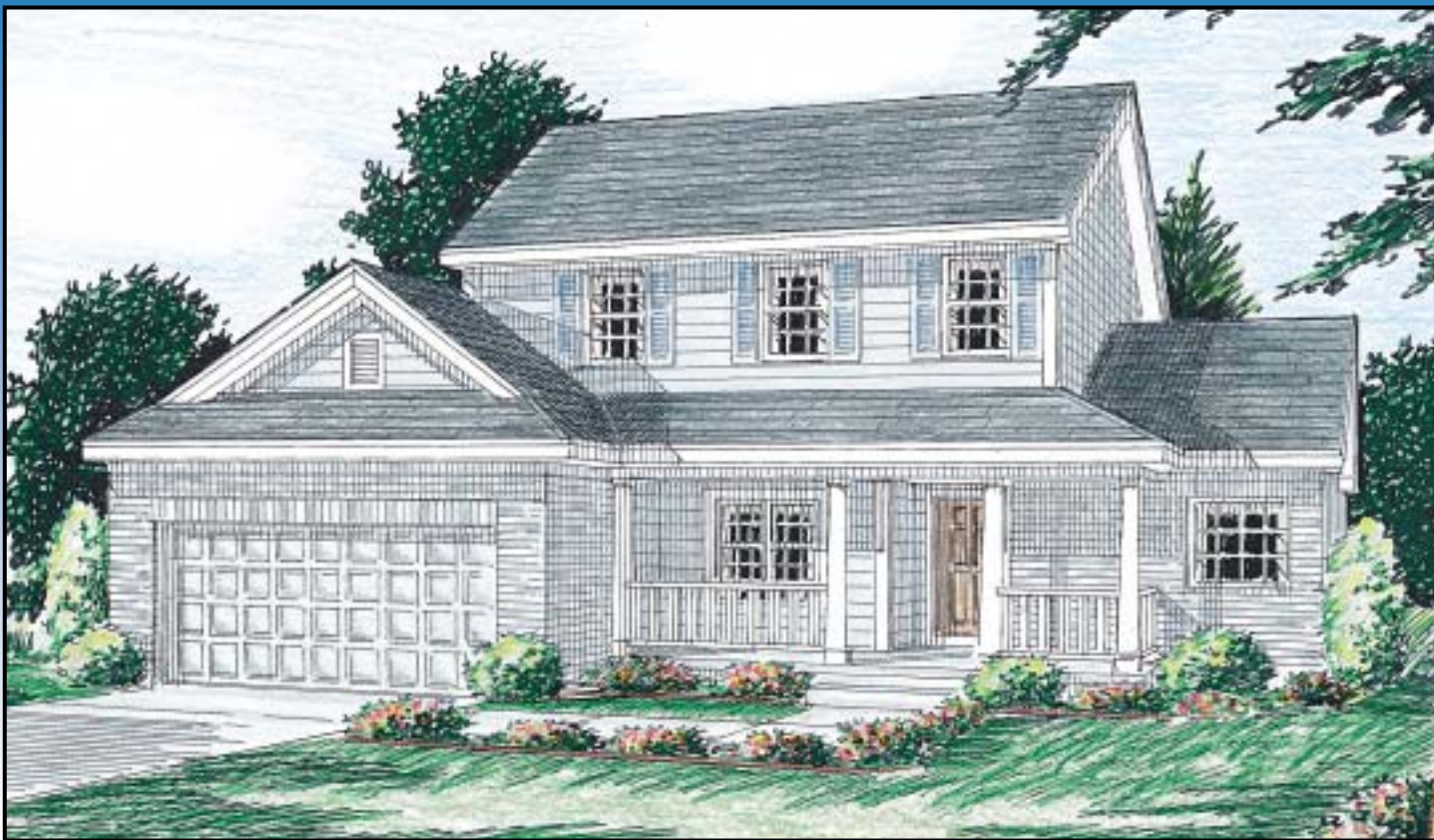
7290 Westgate

This picturesque porch offers the perfect spot to sip lemonade on a warm, sunny day. Inside, columns visually divide the living and dining rooms while allowing family and friends to move freely between the rooms. A wall of windows makes the family room and breakfast area especially cheery. The master suite is sure to please with a corner whirlpool, private sitting area and unfinished storage.



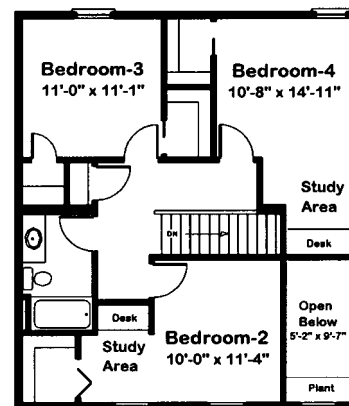
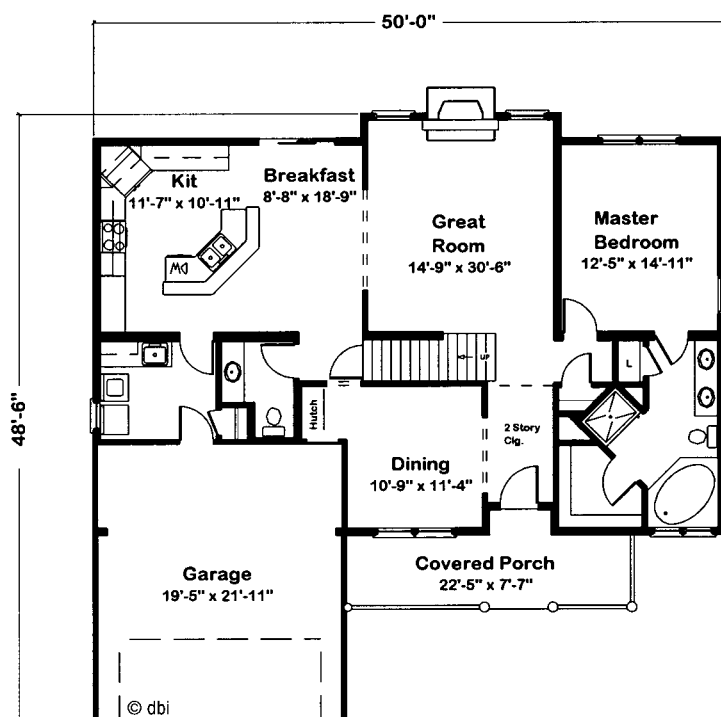
1132 Main Level
1003 Second Level
2135 Total Finished Sq. Ft.

(All footages approximate)



7293 Keystone

A trio of shuttered windows top a room, a recessed hutch space keeps pleasuring porch. Inside, guests are floor space free so that both leaves greeted by a 2-story entry with a can be used in the table. Upstairs, sunlit plant shelf. In the dining the children will have plenty of room for work and play. Bedrooms 2 and 4 have built-in desks in special study areas and walk-in closets. Bedroom 3 has two closets.



1414 Main Level
754 Second Level
2168 Total Finished Sq. Ft.

(All footages approximate)

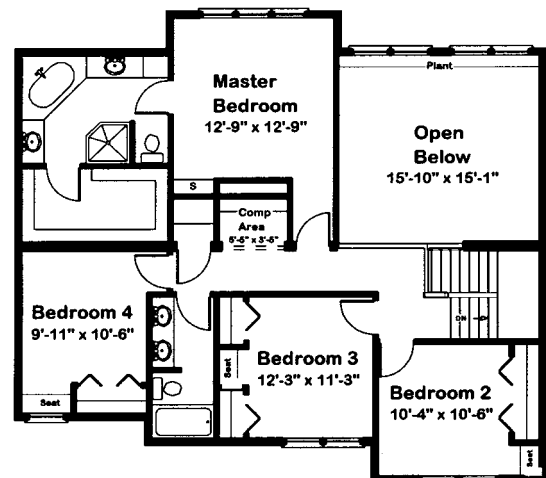
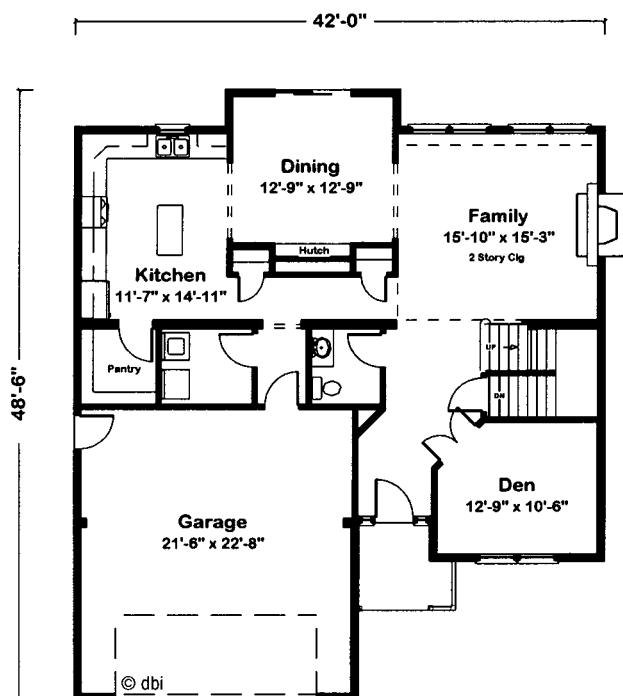


7297 Mission Cove

Stacked windows and a covered stoop are a few of this home's pleasing elements. With rows of windows bridged by a decorative plant shelf,

the 2-story great room will lift spirits after a hard day's work. In the kitchen, a large corner pantry makes it easier to stock up on sale items.

On the second floor, a centrally located computer area is sure to be a popular spot for homework, games and bill paying.



1178 Main Level
1060 Second Level
2238 Total Finished Sq. Ft.
(All footages approximate)

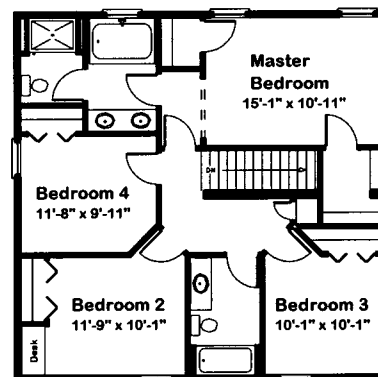
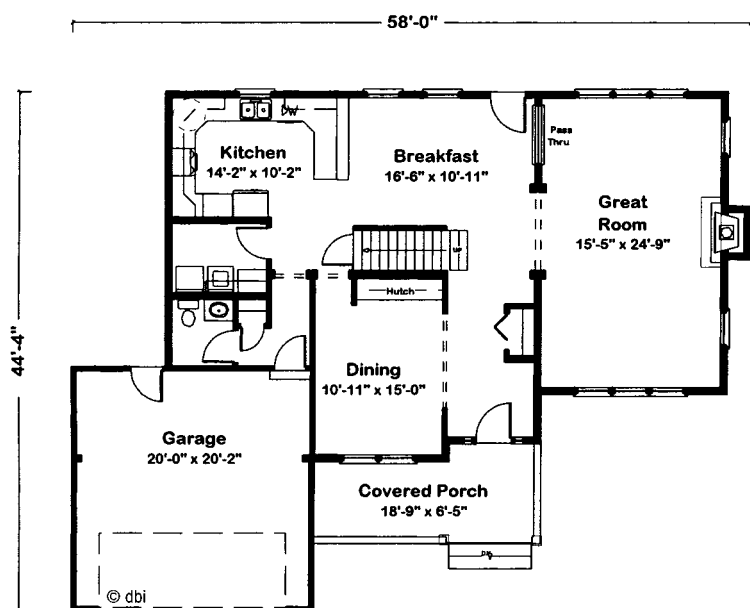


7292 Janbrook

A pair of columns neatly frames the entrance of this charming asymmetrical home. The roomy dining room with built-in hutch provides the

perfect setting for festive holiday dinners with all the trimmings. A pass-thru between the breakfast area and great room offers a handy spot to

line up refreshments. And pulling up a chair for extra guests for everyday meals won't be a problem in the long breakfast area.



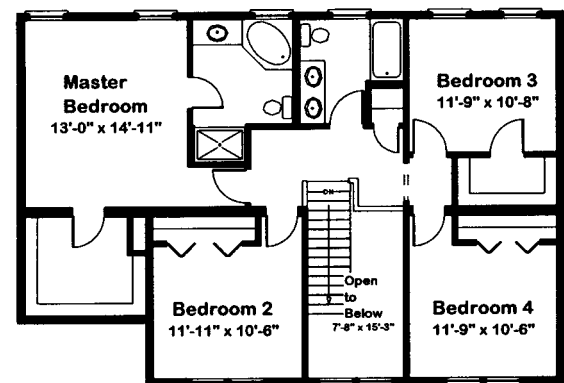
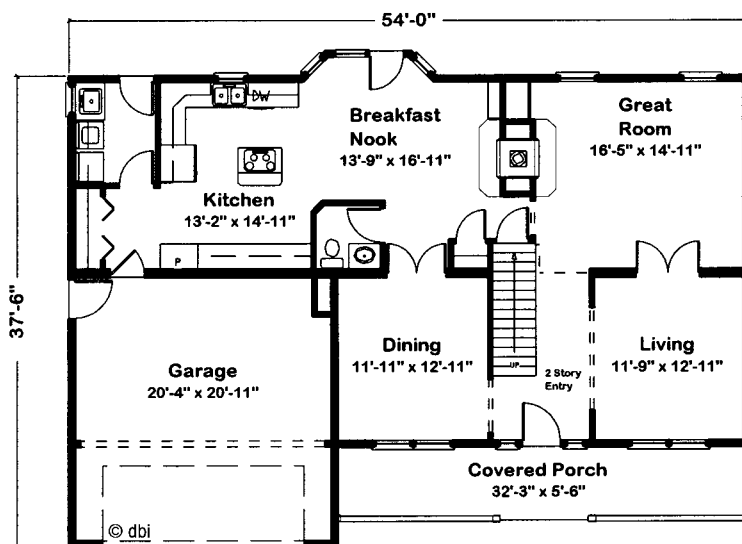
1284 Main Level
968 Second Level
2252 Total Finished Sq. Ft.

(All footages approximate)



7299 Deer Park

A porch this large seems to beg for a swing to while the summer nights away. Inside, the home offers the best of both worlds, with generous formal and informal living spaces. A see-thru fireplace provides cheery breakfasts and cozy evenings snuggled on the couch. A laundry room next to the kitchen makes it convenient to wash a load of clothes while preparing dinner.



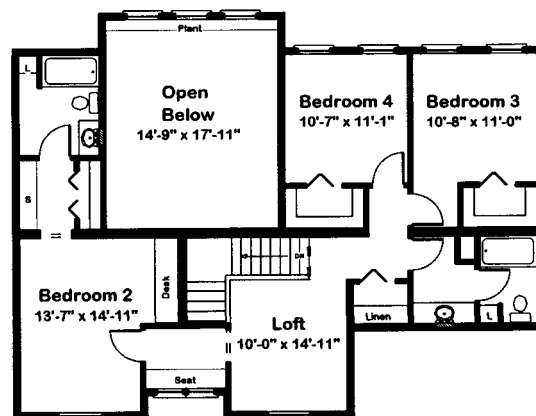
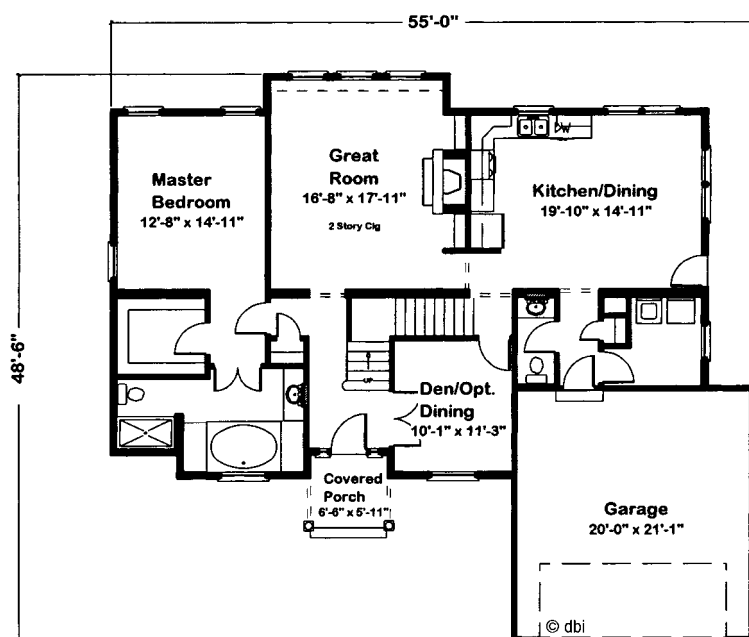
1294 Main Level
1103 Second Level
2397 Total Finished Sq. Ft.

(All footages approximate)



7298 Highland

Pleasing symmetry gives this home with a sunlit whirlpool. Upstairs, an older child, bedroom 2 features a classical look. Adults will enjoy secondary bedrooms will be bright private bath and large, built-in desk. the luxury of a quiet den and the and uncluttered, with ample win-privacy of a secluded master suite dows and walk-in closets. Ideal for



1464 Main Level
994 Second Level
2458 Total Finished Sq. Ft.
(All footages approximate)

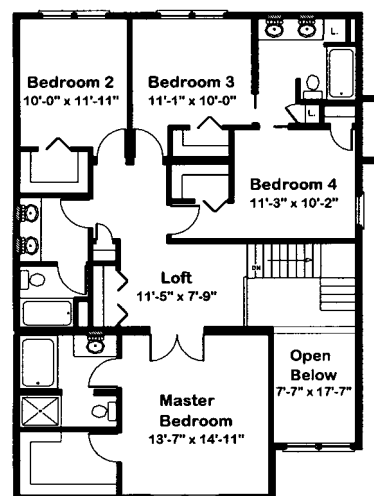
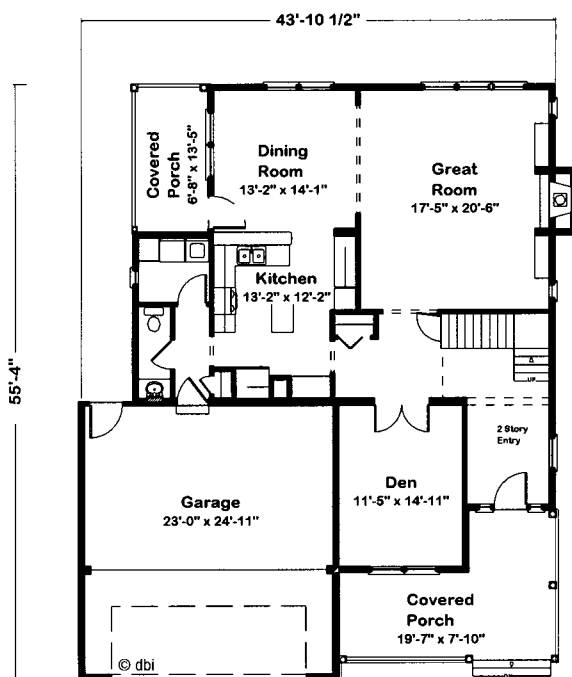


7296 Glen Springs

A special gabled porch draws attention to the front entrance while a porch in the back of the home offers a spot to grill - come rain or

shine. Growing families are sure to appreciate the second level. In addition to the master suite, there are three secondary bedrooms with

walk-in closets and two full baths. A centrally located loft is an ideal spot for a game table. A computer could also be set up in the loft's closet.



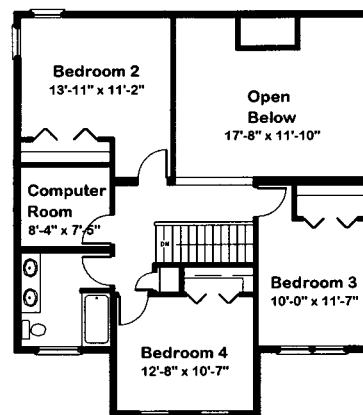
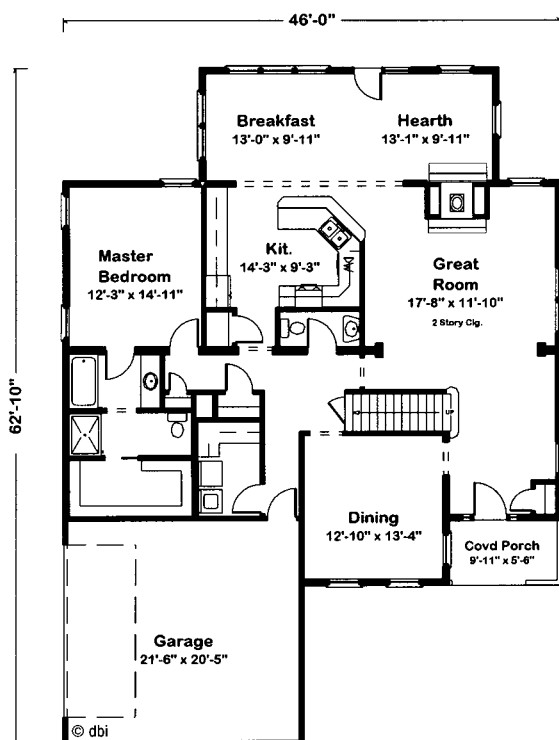
1300 Main Level
1254 Second Level
2554 Total Finished Sq. Ft.

(All footages approximate)



7291 Edgevale

A covered side entrance is just one of the novel features of this home. Inside, an open floor plan gives a sense of spaciousness and added flexibility. An angled snack bar and a combined breakfast area/hearth room provides plenty of room for children's birthday parties or team get-togethers. Upstairs, a balcony offers a stunning view into the great room and a computer room is sure to be a popular spot.



1780 Main Level
 814 Second Level
 2594 Total Finished Sq. Ft.
 (All footages approximate)

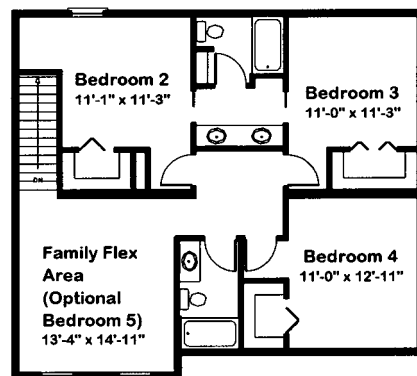
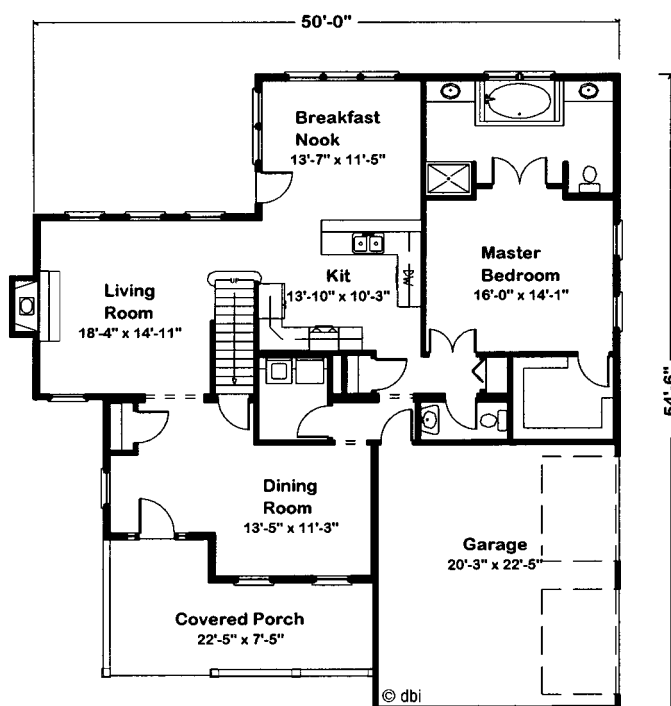


7281 Anchor Mill

Stately columns and repeating gables create an interesting looking home. Guests are greeted by an open entry with a welcoming view of the dining

room. An open floor plan in the back of the home also encourages guests to mingle. Upstairs, children have ample storage for toys, games and collections

with walk-in closets in each bedroom. To top it off, there's a family flex area which may be used as a game room or for a fifth bedroom.



1579 Main Level
1018 Second Level
2597 Total Finished Sq. Ft.
(All footages approximate)

BUILD MORE



More Room

Now build more home...with more room...and more custom home options...than you ever dreamed possible. Now MORE is available to you today when you build with America's finest custom home builder—*Excel Homes*.

More Quality

Your new custom *Excel* home will be precision-built under ideal climate-controlled conditions, free from any interruptions due to weather or other variables. Our expert carpenters, plumbers, electricians, and quality control specialists will work to assure you of the finest in residential construction methods and materials—which often exceed the standards of the other homes built in your neighborhood.

More Options

Excel Homes are renowned for their beautiful design and custom options, from our stunning exteriors to our fully customized interiors featuring *Excel* custom kitchens and baths. Choose from our many special options like upgraded cabinetry, Stainmaster® carpeting, hardwood flooring and luxury whirlpool baths.

More Craftsmanship & Control

Only *Excel* will custom-build your new quality home with more of everything you've dreamed of—and in the timeframes you desire. The only limits are your own imagination. When you're ready to BUILD MORE, your *Excel* builder is ready to make all your dreams come true.

Every Excel builder is an independent local business whose role is to handle all site preparation, finishing and finalizing of your new custom home. Please contact the Excel builder in your area for more information as well as answers to all of your home building questions.



TOLL FREE: 1-800-345-6767

www.excelhomes.com

easy-living collection™



RR #2 Box 683 • Liverpool, PA 17045

800 | 345 | 6767 www.excelhomes.com